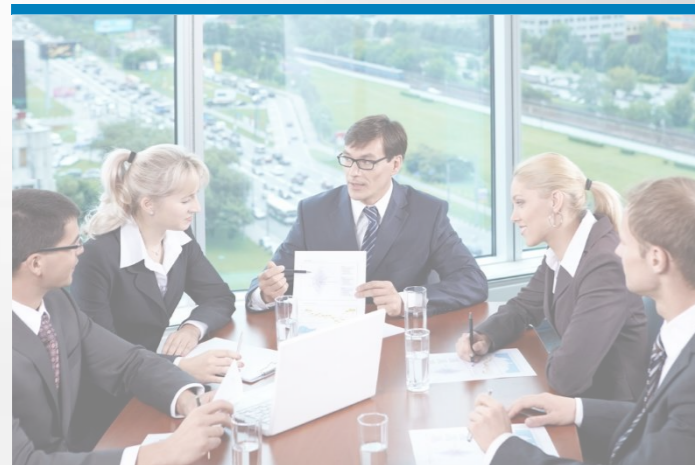


# OVERVIEW OF EXTERNAL MIGRATION STATISTICS IN GEORGIA

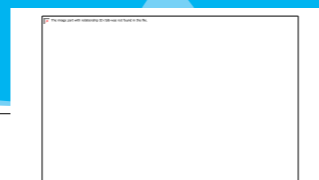
THE USE OF ADMINISTRATIVE DATA  
FOR MEASURING MIGRATION IN GEORGIA



**PAATA SHAVISHVILI**

Deputy Executive Director  
National Statistics Office of  
Georgia

# About the National Statistics Office of Georgia

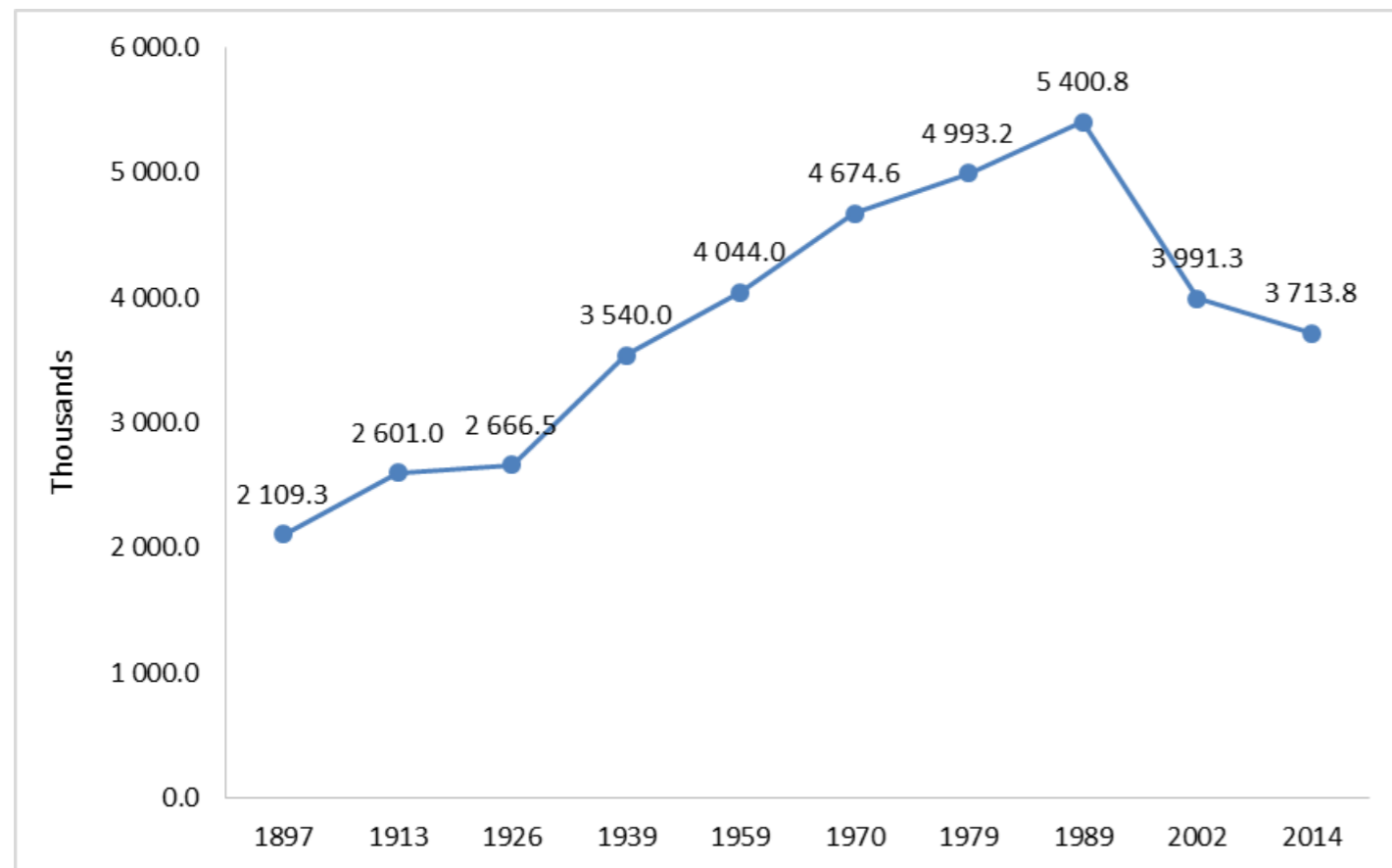


- ❑ National Statistics Office of Georgia (Geostat), the legal entity of public law, carries out its activities in accordance with the UN Fundamental Principles. It is an institution established to produce the statistics and disseminate the statistical information according to the Georgian legislation. National Statistics Office of Georgia is established by the Law of Georgia on “Official Statistics”, 11 December 2009.
- ❑ In accordance with the Law of Georgia on “Official Statistics”, the Geostat is authorized to request from the administrative bodies and other physical and legal entities and receive all the statistical and other information (including confidential information and/or information containing personal data, in line with the “Law on Personal Data Protection”) necessary for carrying out its functions.
- ❑ Upon the request and according to the legislation of Georgia, the administrative bodies are obliged to provide the Geostat with the information on physical and private entities (including confidential information).
- ❑ The data collected for the purpose of producing official statistics is confidential if it allows for identification of individual data.
- ❑ Confidential statistical data cannot be disseminated or used for non-statistical purposes

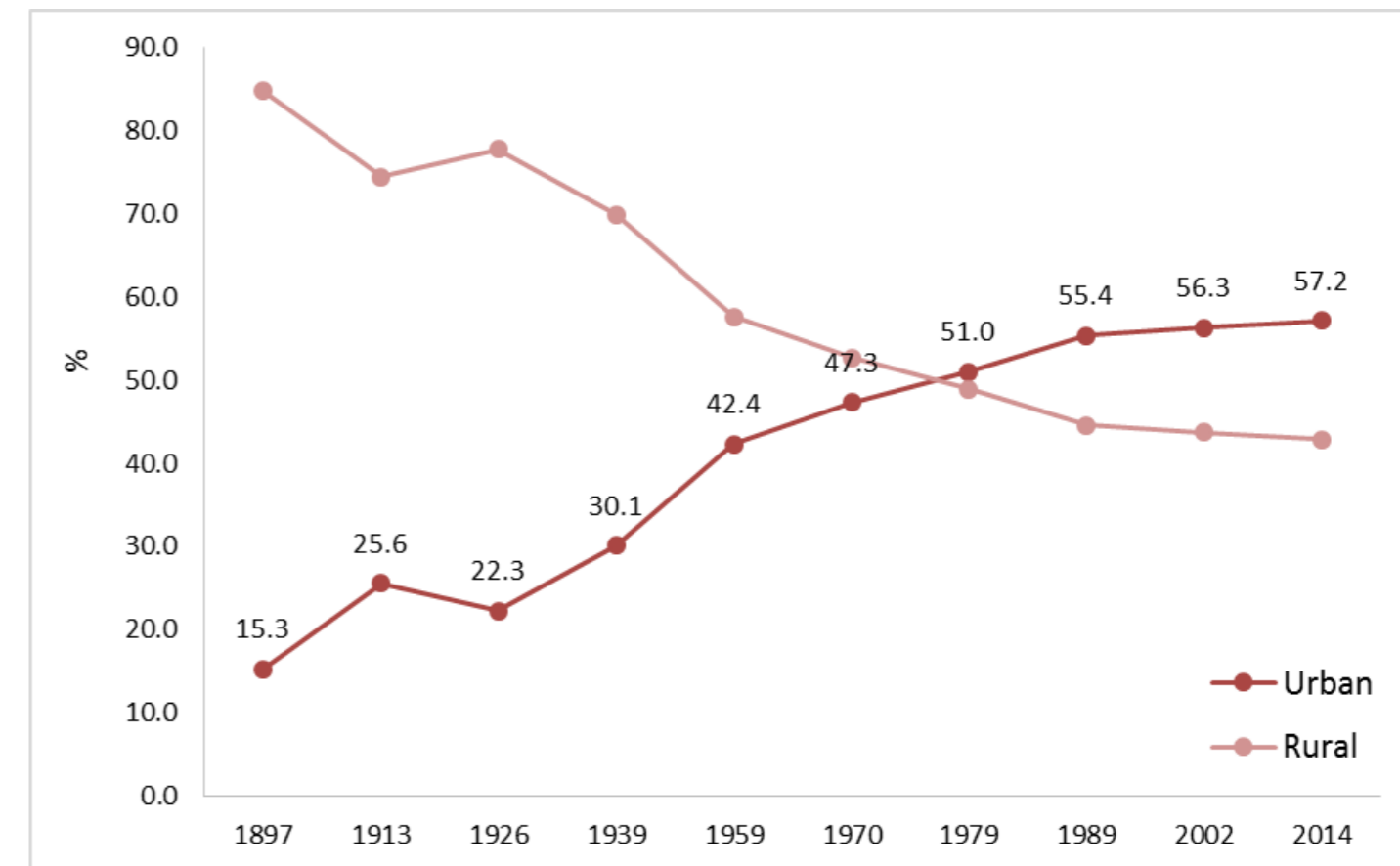
# Population distribution



### NUMBER OF POPULATION (IN THOUSANDS)

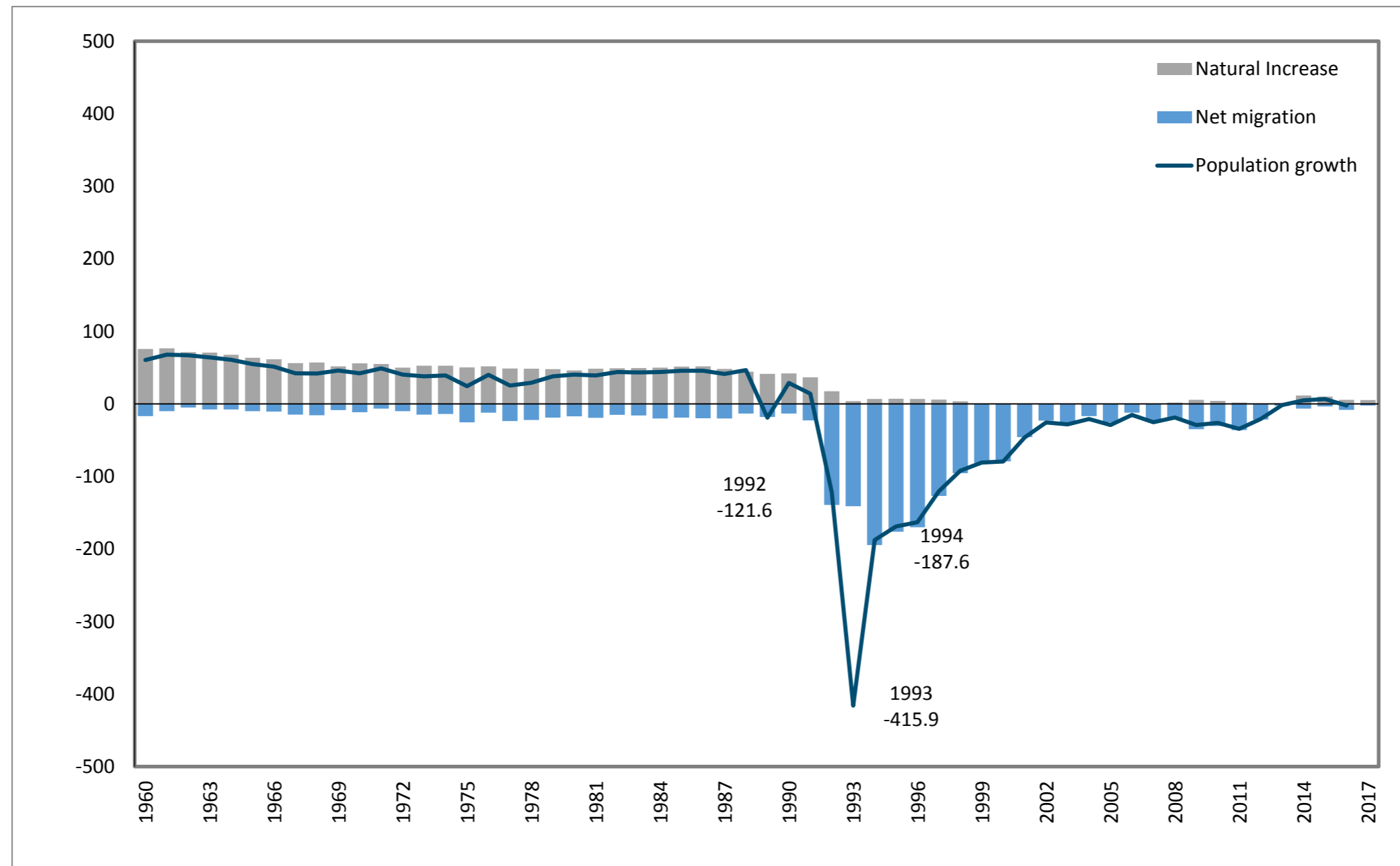


### POPULATION DISTRIBUTION (%) BY URBAN - RURAL SETTLEMENTS

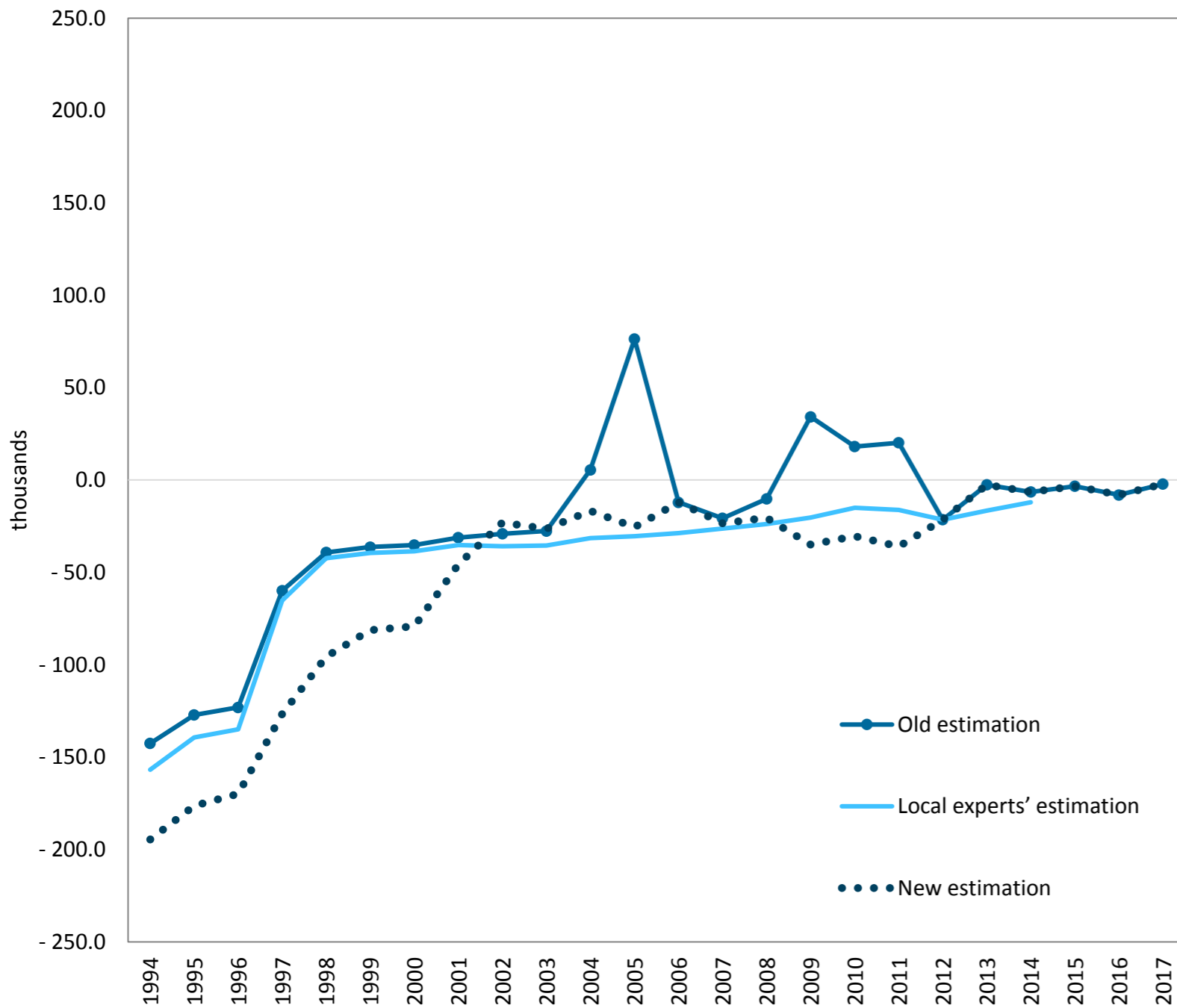


Source: Population Censuses

# The components of population change (thousand persons)



# Migration Statistics in Georgia



## Before 2004

- *Source:* Expert's Estimation

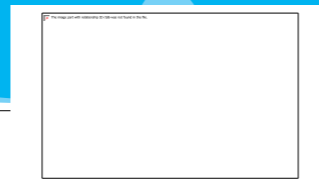
## 2004-2011

- *Source:* Ministry of Internal Affairs
- This data informed **only about the gross numbers of entries and exits** and there was impossible to track individual entries and exists in order to distinguish migrants from other passengers

## Since 2012

- *Source:* Ministry of Internal Affairs
- New methodology

# Definition of Usual Residence



There are two criteria for defining place of usual residence:

- a) “The place at which the persons has **lived continuously for most of the 12 months** (that is, for at least six months and one day), not including temporary absence for holidays or work assignments, or intends to live for at least six month;”
- b) “The place at which person has **lived continuously for at least 12 months**, not including temporary absence for holidays or work assignments, or intends to live for 12 months.”

Source: UN, 2015b, paras. 2.48 -2.50

# Migration Statistics 2012- till present

## ACCORDING TO NEW METHODOLOGY:

**An international immigrant** is a person recorded when crossing the National border who entered the country and has accumulated a minimum of 183 days of residence in the country during the following twelve months; who was not usual resident of the country when entering the country which means that he spent at least a cumulate duration of 183 days of residence outside the country during the twelve months before entering the country.

Similarly **an international emigrant** is a person recorded when crossing the National border who crossed the border and left the country and has accumulated a minimum of 183 days of residence outside the country during the following twelve months; who was usual resident of the country when leaving the country which means that he spent at least a cumulate duration of 183 days of residence inside the country during the twelve months before leaving the country.



# Data of inflows and outflows starting from 2012

## ➤ Main source

- Ministry of Internal Affairs

## ➤ Geostat is receiving the individual data (annually) by:

- Citizenship
- Birth date
- Sex
- Duration of stay in/out of Georgia



# Data of inflows and outflows starting from 2012 (cont.)



The main products and dissemination date	
Description	Date
<b>STATISTICAL DATA</b>	
<ul style="list-style-type: none"><li>• Net migration</li><li>• Emigrants and Immigrants by age and sex</li><li>• Emigrants and Immigrants by citizenship</li></ul>	End of <b>April</b>
<b>Publication</b>	
Statistical Publication " <b>Demographic Situation in Georgia</b> " (in Georgian and English, Online Version)	Mid of October

# Data of inflows and outflows starting from 2012 (cont.)



## ➤ Data limitation:

- Purpose of migration
- Country of destination / Place of destination in Georgia
- Country of origin / Place of origin in Georgia
- Education
- Status of Economic Activity
- Employment Status
- Occupation

# Future Plans for improving migration statistics

- Prepare for the next Population Census
- Start activities regarding to establishing of Population Register



Thank you for your attention!

---

**PAATA SHAVISHVILI**

Deputy Executive Director  
National Statistics Office of Georgia

[pshavishvili@geostat.ge](mailto:pshavishvili@geostat.ge)

[www.geostat.ge](http://www.geostat.ge)